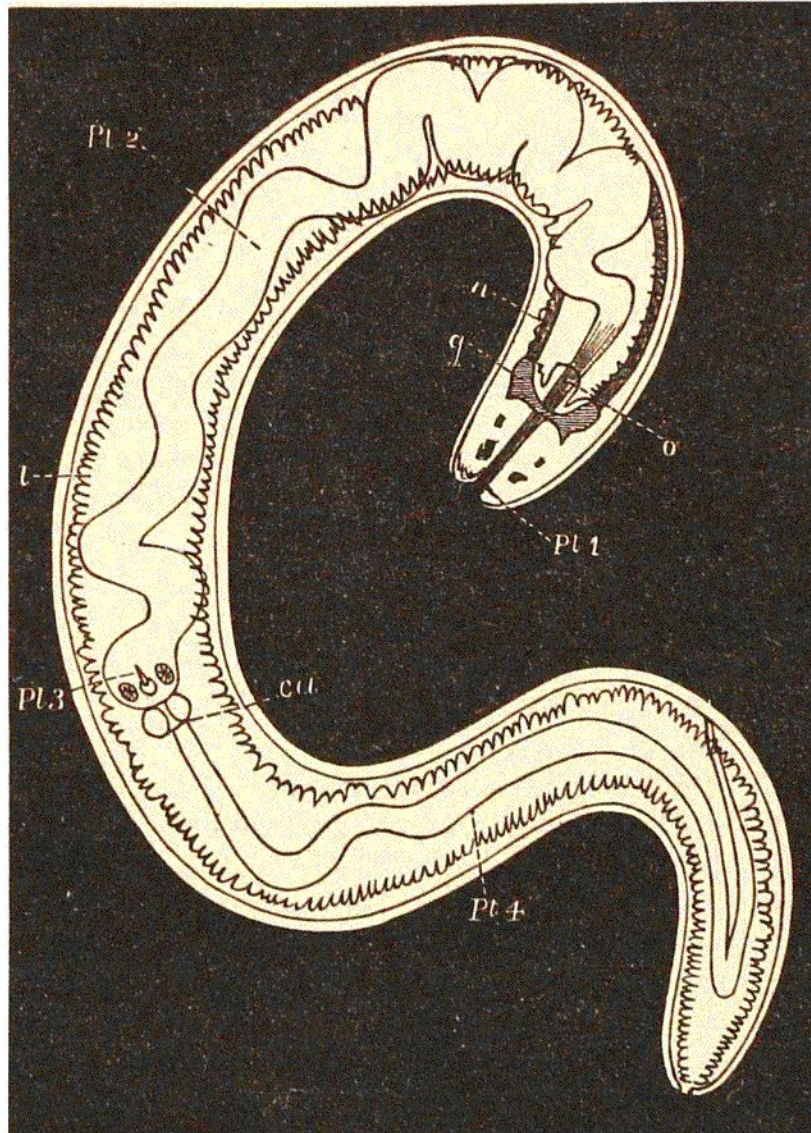


trees with the greatest ease. A white Sand-crab (*Ocypoda*), burrows deep in the sand-hills, and is very difficult to dig out, and a huge ugly Land-crab (*Cardisoma*) is common further inland. A small White-crab (*Remipes*) lives in the sand on the shore just below the verge of the water; it burrows rapidly in the sand until covered, and then by ejecting a small jet of water from its gills clears a small passage for respiration, remaining concealed.



LAND NEMERTINE, TETRASTEMMA AGRICOLA. (YOUNG MALE.)

Pt. 1—4 Successive portions of the proboscis; 1 entrance; 2 papillary portion; 3 pouch of stylets; 4 glandular portion; 'ca' muscular entrance of glandular portion; 'o' mouth; 'i' intestine; 'g' ganglion; 'n' lateral nerves.

(After a figure by Von Willemoes Suhm.)

A land Nemertine worm was discovered by Von Willemo Suhm, living in moist earth. Only one other terrestrial Neme