

The next stage, for which we are indebted to Willemoes Suhm's drawing, from which the annexed figure is taken, is described by him as being "a *Leucifer* larva with the divided legs before the moult previous to maturity.

"H  $\frac{1}{7}$   $\times$  55 nat. size, 15 March and 1st September 1875. Pacific.

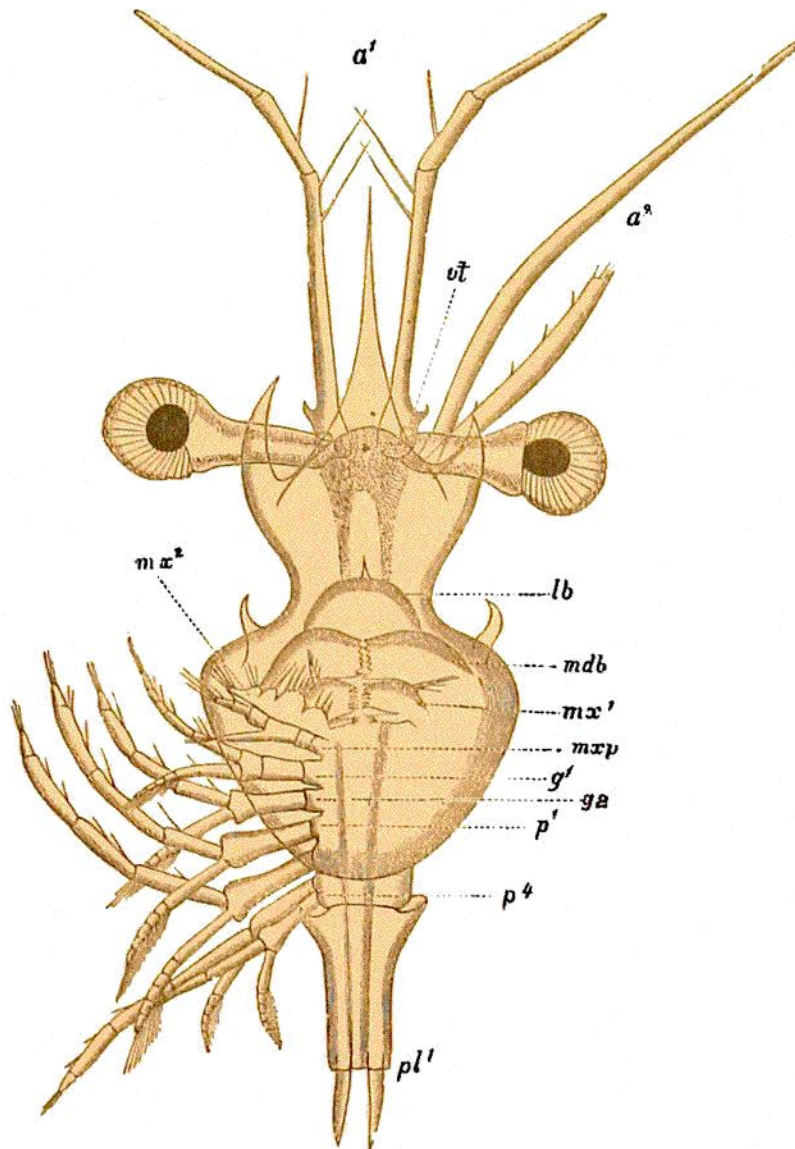


FIG. 61.—*Lucifer*, young, from a drawing by v. Willemoes Suhm; *a¹*, first pair of antennæ; *ot*, otolith; *a²*, second antenna; *lb*, labrum; *mdb*, mandible; *mæ¹*, first maxilla; *mæ²*, second maxilla; *mxp*, maxilliped; *g¹*, first gnathopod; *g²*, second gnathopod; *p¹-⁴*, pereiopoda; *pl¹*, first pleopod.

"Length of rostrum,	.	.	.	.	.	0.17 mm.
"    carapace,	.	.	.	.	.	0.70 "
"    pleon,	.	.	.	.	.	1.92 "
"    entire,	.	.	.	.	.	2.79 "
Width of carapace,	.	.	.	.	.	0.52 "
Length of ophthalmopod,	.	.	.	.	.	0.35 "
Greatest width of eye,	.	.	.	.	.	0.22 "
Last (fourth) pereiopod very small. Carapace extended. Otolith visible."						

The specimen here detailed is longer than the preceding in the proportion of