

either for his *Rhabdosoma whitei* or his *Rhabdosoma armatum*. Dr. Giles says of the first and second gnathopods of his species that, unlike those of the forms described by Spence Bate, Streets, and Claus, they "are subequal and very closely resemble each other." When these small appendages are observed with a low power, such a statement would be readily applied to them, and in describing the type-specimen Milne-Edwards is content to say, "pates des deux premières paires extrêmement petites," without the slightest distinction between them, yet in all probability all the forms have the first gnathopods easily distinguishable from the second when highly magnified. The comparative lengths of the segments, the uropods, and the telson would seem to be highly variable according to the age or sex, but other characters when more completely examined than they have hitherto been may suffice for establishing specific distinction between some of the forms included in the synonymy here discussed.

*Rhabdosoma armatum* (Milne-Edwards). Specimens B, C.

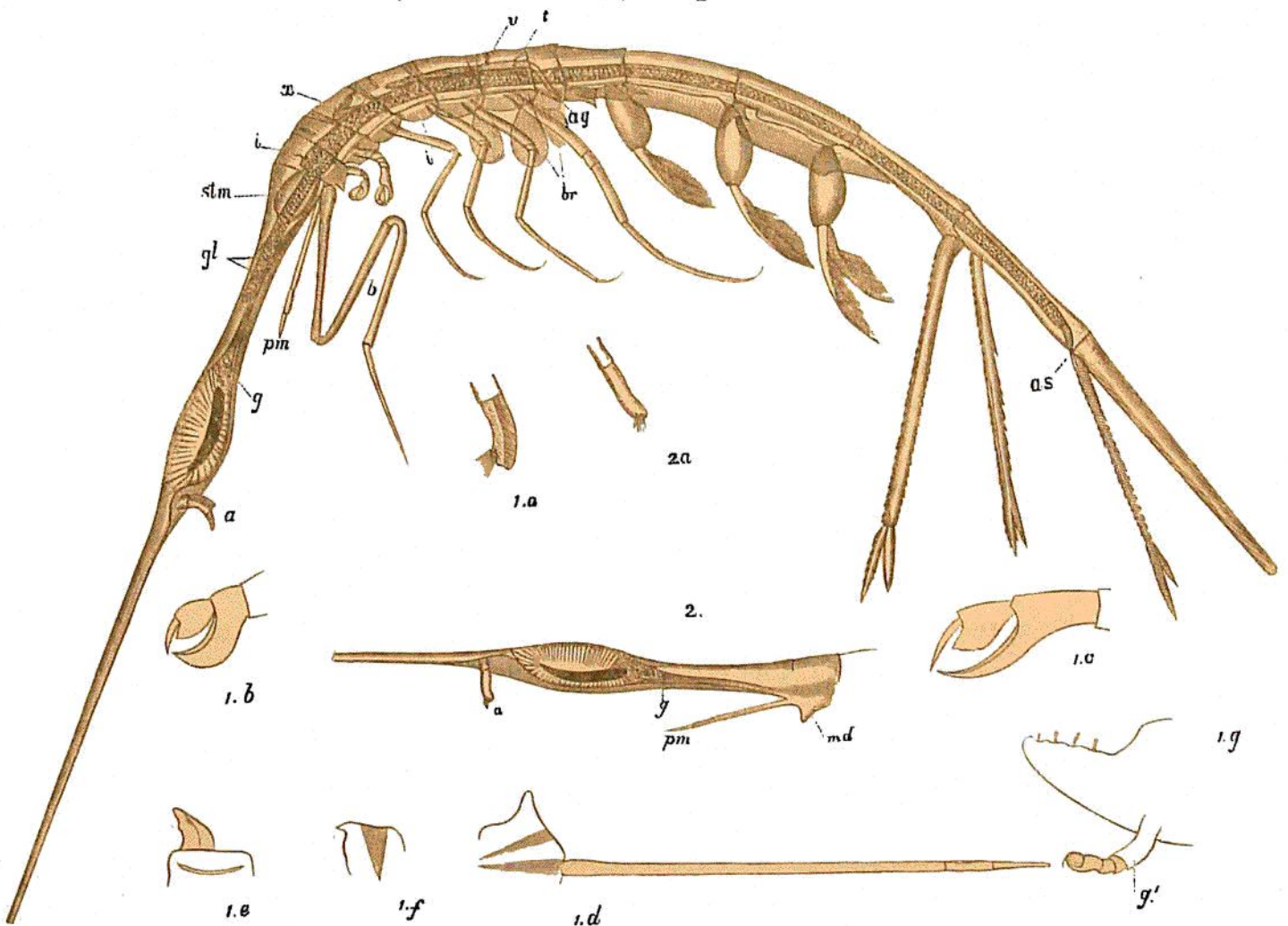


Fig. 82.

The woodcuts here given are reproduced on a reduced scale from a plate drawn by the late R. v. Willemoes Suhm during the voyage, and accompanied by the following explanation in his handwriting:—